

H&S

H D TWIN AUGER

Self-Unloading Forage Box



⚠ WARNING

READ AND UNDERSTAND THIS MANUAL BEFORE OPERATING THIS EQUIPMENT.

UNSAFE OPERATION OR MAINTENANCE OF THIS EQUIPMENT CAN RESULT IN SERIOUS INJURY OR DEATH.

OPERATOR'S MANUAL

and

PARTS LIST

2-6-2009

Manufactured By
H&S MANUFACTURING CO., INC.
P.O. BOX 768 • (715) 387-3414 FAX (715) 384-5463
MARSHFIELD, WISCONSIN 54449

H&S

H D TWIN AUGER

SELF-UNLOADING FORAGE BOX

CONTENTS

Warranty & Warranty Registration Card	1-2
Dealer Pre-Delivery & Delivery Checklist	3
Be Alert Symbol	5
Explanation of Safety Signs	6
Danger - Warning Decals	7-8
Warning - Owner Must Read and Understand	9
Warning - Emergency Stop - Cross Conveyor Clutch Operation	10-11
Operation & Adjustments	12-16
Lubrication Guide	16-18
Slide Out Extension - Optional Hydraulic Drive	18
Danger - Entering Box	19
Decal Location & Identification	20-21
Ordering Parts - About Improvements	22
Figure A - Lighting Assembly - Wiring Code	23
Figure 1 - Housing Components for Unit	24-25
Figure 2 - Beaters & Main Apron Drive	26-27
Figure 3 - Augers & Drive Assembly	28-29
Figure 4 - Shields, Beater Clutch, Belt Drive	30-31
Figure 5 - Cross Conveyor Clutch - Belt Drive	32-33
Figure 6 - Bevel Gearbox	34-35
Figure 7 - Worm Gearbox	36-37
Figure 8 - Box Components	38-39
Figure 9 - Tie Down Kit	40
Figure 10 - PTO Parts	41
Figure 11 - Optional Hydraulic Drive	42
Figure 12 - Optional Hydraulic Drive (2000 Series)	43
Service Notes	44
SPECIFICATIONS	INSIDE BACK COVER

FIGURE 1

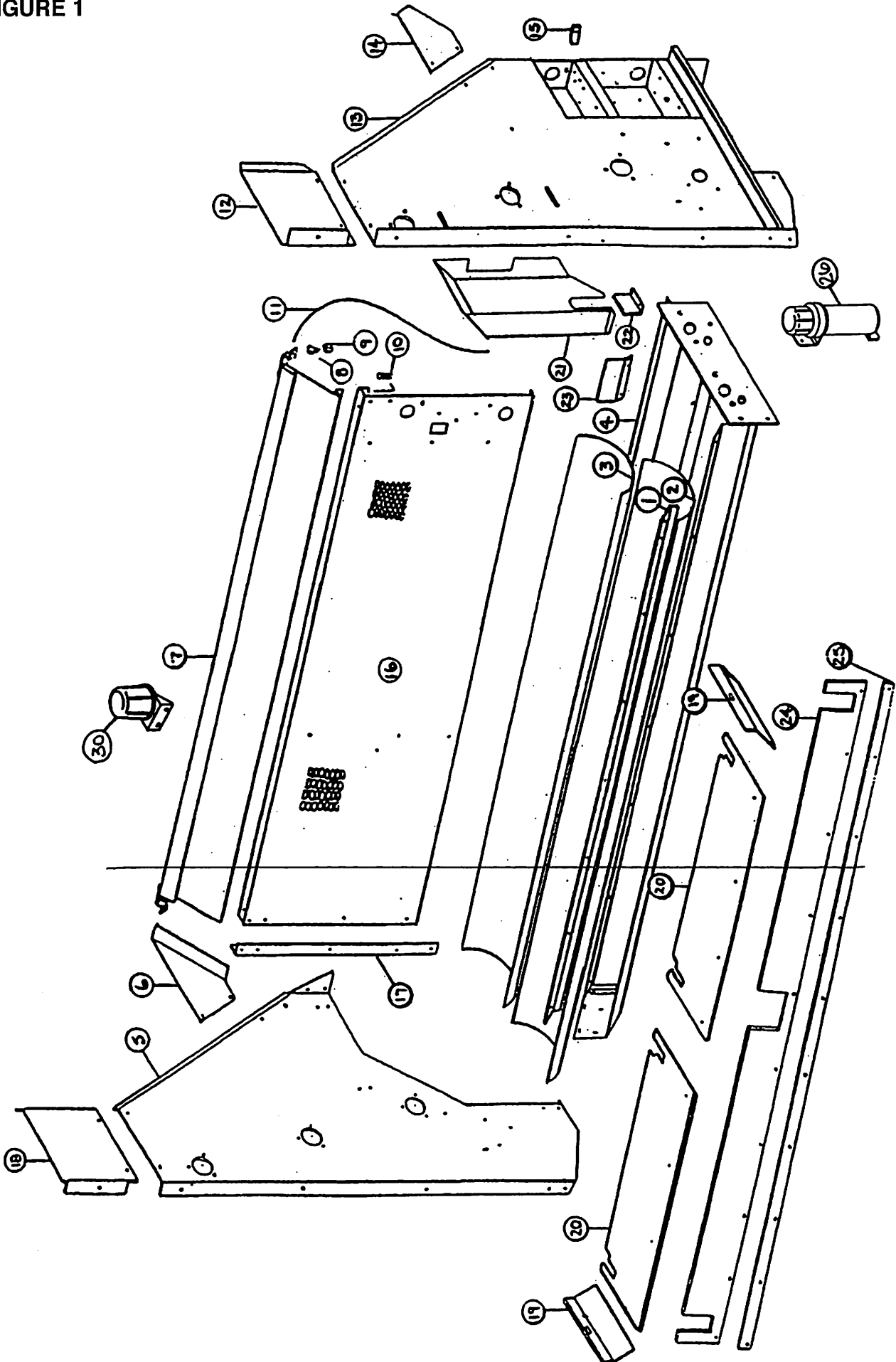
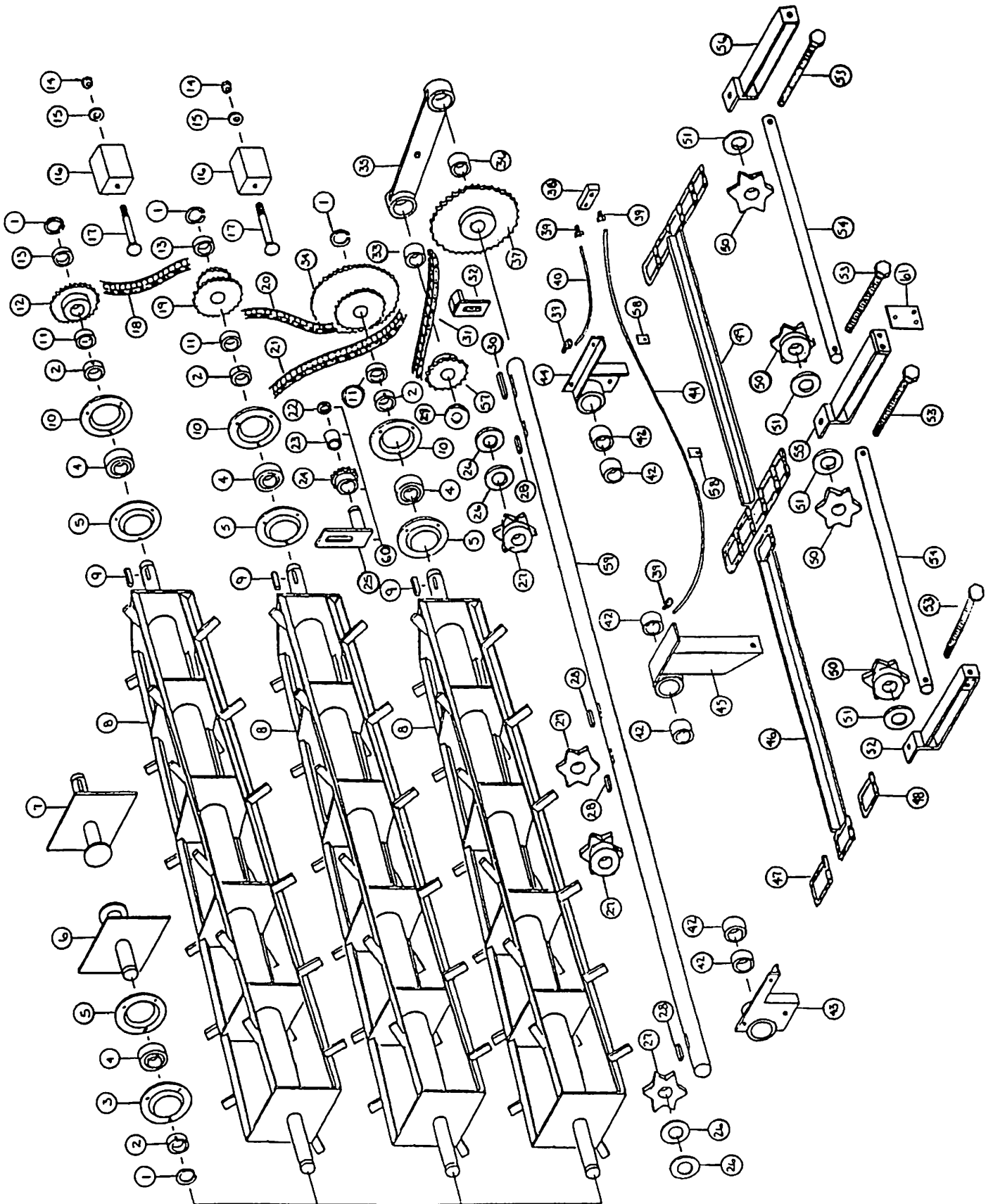


FIGURE 1
HOUSING COMPONENTS FOR UNITS

ITEM	PART NO.	DESCRIPTIONS
1.	ST82	Poly Hold down and Seal Holder
2.	ST2	Poly Liner for Rear Auger
3.	ST3	Poly Liner for Front Auger
4.	ST83	Auger Housing
5.	S4	LH Side Panel
6.	S5	LH Emergency Stop Panel
7.	S370	Emergency Stop Panel
8.	ES14	Thimble (2)
9.	ES15	Cable Clamp (2)
10.	S7	Spring for Emergency Stop
11.	S8	Emergency Stop Cable
12.	S9	RH Side Panel Top
13.	ST5	RH Side Panel
14.	S11	RH Emergency Stop Panel
15.	S12	Gearbox Brace
16.	ST84	Front Main Panel
17.	ST7	LH Front Angle
18.	S3	LH Side Panel Top
19.	S20	Apron Side Spacer
20.	PB74	Drive Shaft Panel
21.	ST66	Auger Drive Shield
22.	ST9	Auger Chain Shield
23.	ST67	Wiper End
24.	S306	Rubber Seal
25.	S288	Rubber Seal Strap
26.	S522	Manual Holder
30.	CHM38	Plug Storage

FIGURE 2



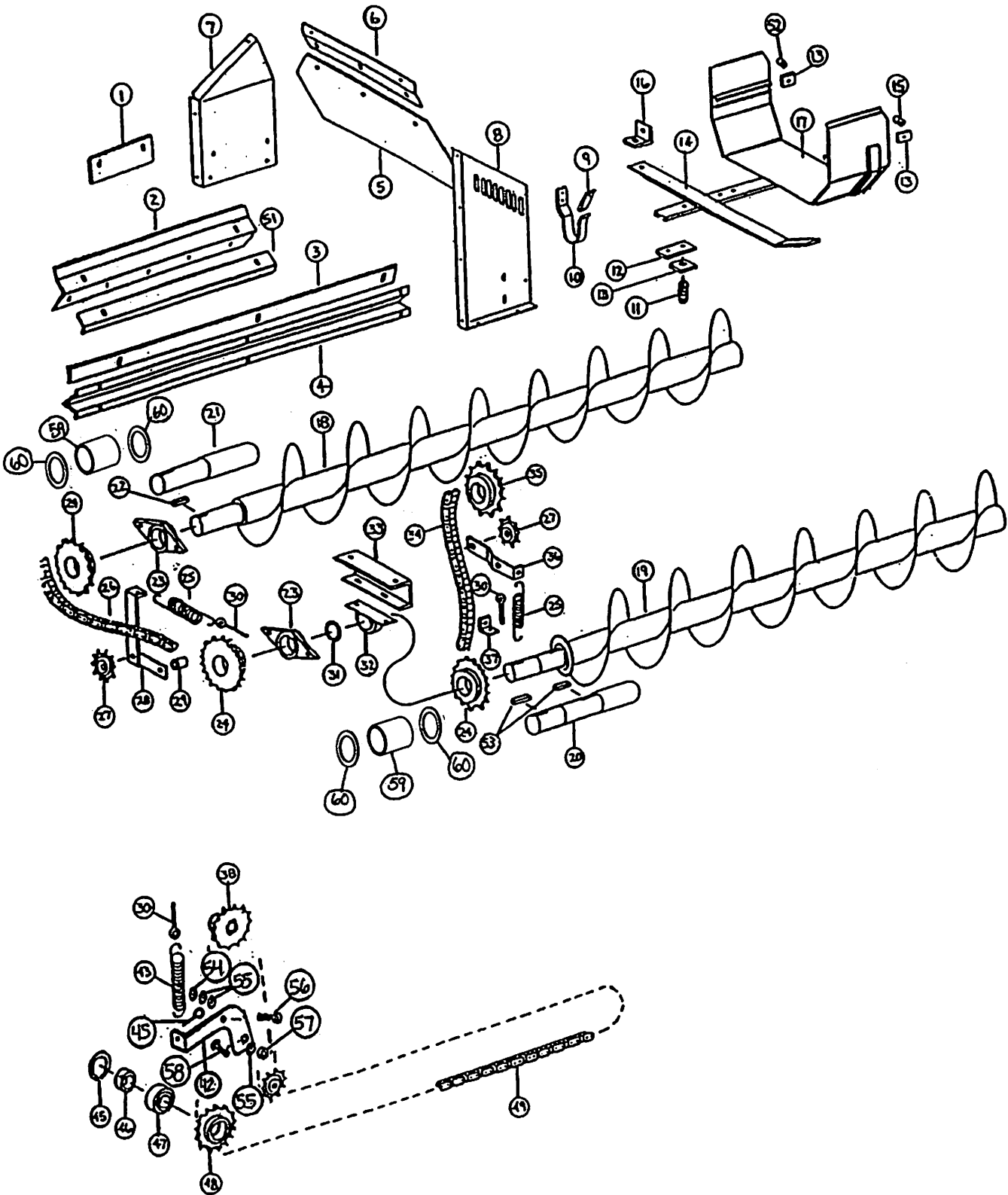
**FIGURE 2
BEATERS AND MAIN APRON DRIVE**

ITEM	PART NO.	DESCRIPTION	ITEM	PART NO.	DESCRIPTION
1.	F73	Snap Ring	38.	S46	Grease Line Bracket
2.	F16	Lock Collar	39.	S47	Grease Line Fitting
3.	F114	Bearing Flange w/Zerk	40.	S48	Short Grease Line
4.	F115	Bearing Greaseable Type	41.	S49	Long Grease Line
5.	F14	Bearing Flange	42.	S50	Drive Shaft Bushing
6.	S23	LH Beater Stub Shaft	43.	S51	LH Drive Shaft Bracket
7.	S24	RH Beater Stub Shaft	44.	S52	RH Drive Shaft Bracket
8.	S25	Beater	45.	S53	Center Bearing Bracket
9.	G23	5/16" x 1-3/8" Square Key	46.	S54	T-Rod Slat w/Att. Links
10.	F114A	Bearing Flange w/Zerk 45 Degree		S233	667H Pintle Slat w/Att. Links
11.	S218	3/8" Spacer	47.	S55	T-Rod Standard Link
12.	S26	3rd Beater Sprocket 20T	48.	S56	T-Rod Connector Link
13.	S219	1/4" Spacer		11S51	667H Pintle Connector Link
14.	K60	Nut		11S50	667H Pintle Att. Link RH or LH
15.	X67	Washer	49.	S57	T-Rod Complete Apron 14' Box
16.	S27	Wood Chain Tightener		S230	667H Pintle Apron 14'
17.	S28	Carriage Bolt		S58	T-Rod Complete Apron 16' Box
18.	X58	2nd to 3rd Beater Chain 89 Pitches #50		S231	667H Pintle Apron 16'
19.	S30	2nd Beater Sprocket 30T - 13T		S59	T-Rod Complete Apron 18' Box
20.	S31	1st to 2nd Beater Chain 98 Pitches #50		S232	667H Pintle Apron 18'
21.	X58	Beater Drive Chain 89 Pitches #50	50.	S60	Rear Idler Sprocket
22.	10R32	Snap Ring	51.	S61	Idler Shaft Spacer
23.	S33	Chain Tightener Bushing	52.	S62	LH Rear Idler Bracket
24.	S34	Tightener Sprocket w/Bushing	53.	A7	Tightener Bolt
25.	L10R35	Chain Tightener Bracket	54.	S63	Rear Idler Shaft
26.	S36	Drive Shaft Spacer	55.	S64	Center Idler Bracket
27.	S37	Apron Drive Shaft Sprocket	56.	S65	RH Rear Idler Bracket
28.	S436	3/8" x 1-1/2" Square Key	57.	ST11	Worm Gear Shaft Sprocket 13T
29.	S327	Poly Gearbox Washer		S66	Slow Down Sprocket 11T
30.	S38	3/8" x 2-3/8" Square Key	58.	S67	Grease Line Clip
31.	ST10	Apron Drive Chain 56 Pitches #80	59.	S68	Main Apron Drive Shaft
32.	S40	Chain Tightener	60.	S216	Chain Tightener Assembly
33.	S41	Bushing	61.	S371	Cable Bracket
34.	S42	1st Beater Sprocket 60T-20T			
35.	S43	Drive Shaft Brace			
36.	S44	Bushing			
37.	S45	Apron Drive Sprocket 30T			

NOT SHOWN

F157	#80 Connector Link
F158	#80 Offset Link
X60	#50 Offset Link
X61	#50 Connector Link

FIGURE 3



**FIGURE 3
AUGERS AND DRIVE COMPONENTS**

ITEM	PART NO.	DESCRIPTION	ITEM	PART NO.	DESCRIPTION
1.	ST68	Poly Hold down	30.	ES10	5/16" x 3" I-Bolt
2.	ST69	Auger Center Wiper	31.	F73	Snap Ring
3.	X83	Wiper Blade	32.	12N36	Bearing Assembly
4.	ST14	Front Wiper Blade Holder	*	12N33	Bearing
5.	ST15	Poly Shield	*	12N34	Bearing Cover
6.	ST16	Poly Shield Bracket	*	12N35	Bearing Holder
7.	ST17	Extension Panel Rear	33.	ST63	Auger Bearing Bracket
8.	ST18	Extension Panel Front	34.	X58	#50 Roller Chain 89 Pitch
9.	S78	PTO Holder Rubber Tab	35.	ST59	Sprocket 20T
10.	S354	PTO Holder	36.	ST32	Tightener Bracket
11.	S7	Spring	37.	ST33	Angle
12.	ST19	Bottom Poly Slide	38.	S82	24T Sprocket
13.	ST20	Poly Slide	42.	S459	Tightener Bracket
14.	ST21	Handle for Extension	43.	ST36	Spring
15.	ST81	Spacer	44.	K79	I-Bolt
16.	ST22	Angle	45.	K92	Snap Ring
17.	ST23	Extension Shell	46.	4C9	Lock Collar
18.	ST24	Rear Auger	47.	K90	Bearing
19.	ST25	Front Auger	48.	K89	Idler Sprocket 20T
20.	ST26	Front Auger Stub Shaft	49.	ST85	#50 Roller Chain 183 Pitch
21.	ST27	Rear Auger Stub Shaft	51.	ST72	Center Wiper
22.	G23	5/16" x 1-3/8" Key	52.	ST77	3/8" Spacer
23.	12N29	Bearing	*	X60	#50 Offset Link
24.	ST28	Sprocket	*	X61	#50 Connector Link
25.	R27	Spring	53.	WM121	Sq. Key 5/16" x 1"
26.	ST29	#50 Roller Chain 61 Pitch	54.	A34	Washer 1/2"
27.	K101	Tightener Sprocket	55.	S468	Washer
28.	ST30	Tightener Bracket	56.	16SV126	Counter Sunk Bolt 2"
29.	L12R22	Spacer	57.	R65	Spacer 3/8"
NOTE: * (Means Not Shown)			58.	S467	Counter Sunk Bolt 2-1/4"
			59.	ST92	Conduit Spacer
			60.	ST93	Auger Spacer Washer

FIGURE 4

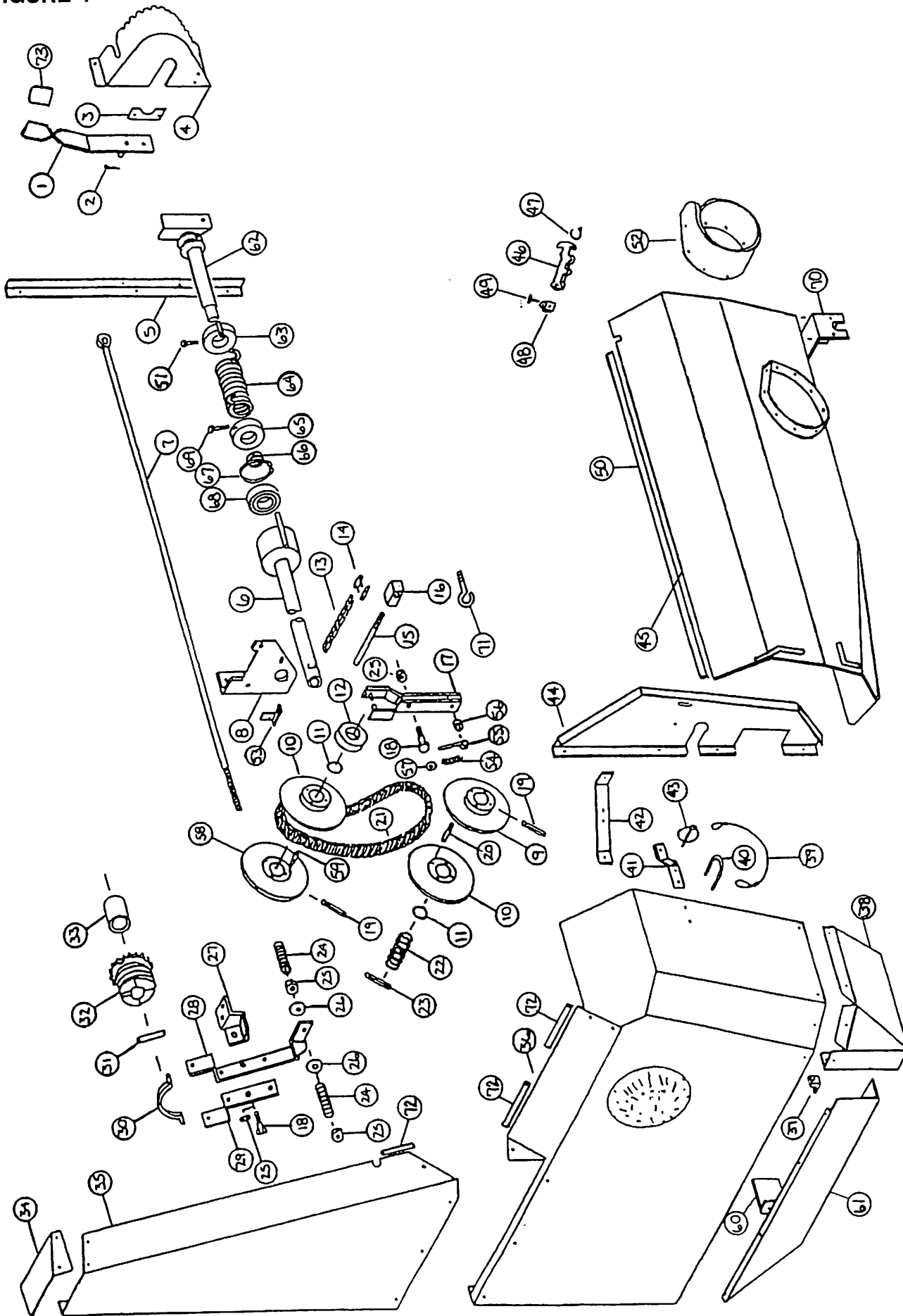


FIGURE 4
SHIELDS - BEATER CLUTCH - BELT DRIVE

ITEM	PART NO.	DESCRIPTION	ITEM	PART NO.	DESCRIPTION
1.	S364	Shifter Handle	38.	ST40	Side Shield Bottom
2.	X43	Cotter Pin	39.	S122	Clip Pin Cable
3.	S91	Shifting Pipe Bracket	40.	F32	U-Bolt
4.	S360	Speed Selector Panel	41.	S123	Shield Latch Bracket
5.	S365	Front Center Angle	42.	S234	Shield Brace
6.	S366	Shifting Pipe (Apron)	43.	F56	Clip Pin
7.	S367	Shifting Rod (Beater)	44.	ST86	Front Upright Shield
8.	S96	Shifting Bracket	45.	S334	Front Shield
9.	S97	Stationary Sheave	46.	X192	Front Shield Latch (Rubber)
10.	S295	Sliding Sheave	47.	X193	Latch Catch Bracket
11.	S99	O-Ring	48.	X194	Latch Mounting Bracket
12.	S100	Thrust Bearing	49.	X195	Pin
13.	S101	#40 Chain 5 Pitch	50.	S359	Plastic Edging 38"
14.	S102	#40 Connector Link	51.	X111	Bolt 3/8" x 1" GR.5
15.	S103	Linkage Rod	52.	S131	PTO Rubber Shield
16.	S104	Adjustment Block	53.	S221	Spring Shift Bracket
17.	S105	Variable Speed Shifter	54.	S222	Shifting Spring
18.	R10	1/2" x 1-1/4" Bolt GR.5	55.	S220	Shifting Spring Rod
19.	S106	5/16" x 2-3/4" Expansion Pin	56.	K94	Spacer
20.	S296	Sheave Pin	57.	T16	1/4" Flat Washer
21.	S108	Variable Speed Belt	58.	S97	Sheave
22.	S109	Spring	59.	S296	Sheave Pin
23.	S110	1/4" x 2" Expansion Pin	60.	ST45	Inside Shield
24.	S111	Spring	61.	ST39	Lower Side Shield
25.	9S17	1/2" Lock Nut	62.	S290	Shifter Pipe Handle End
26.	S285	Beater Clutch Washer	63.	S291	Spring Pin Collar
27.	S112	Beater Clutch Bracket	64.	S292	Spring
28.	S113	Beater Clutch Long Arm	65.	S293	Spring Collar
29.	S114	Beater Clutch Short Arm	66.	4C9	Lock Collar
30.	ST58	Clutch Yoke	67.	K92	Snap Ring
31.	S115	Beater Clutch Pin	68.	K90	Bearing
32.	S116	Beater Clutch Sprocket	69.	17G141	Bolt 3/8" x 1-1/4" GR.5
33.	S117	Beater Clutch Bushing	70.	S346	Light Bracket
34.	S118	Beater Shield Top	71.	BFR319	I-Bolt
35.	S119	Beater Side Shield	72.	S328	Edging 3-1/2"
36.	S120	Main Side Shield	73.	S403	Handle Grip
37.	D58	Shield Angle	*	S368	Complete Shifter

NOTE: * (Means Not Shown)

FIGURE 5

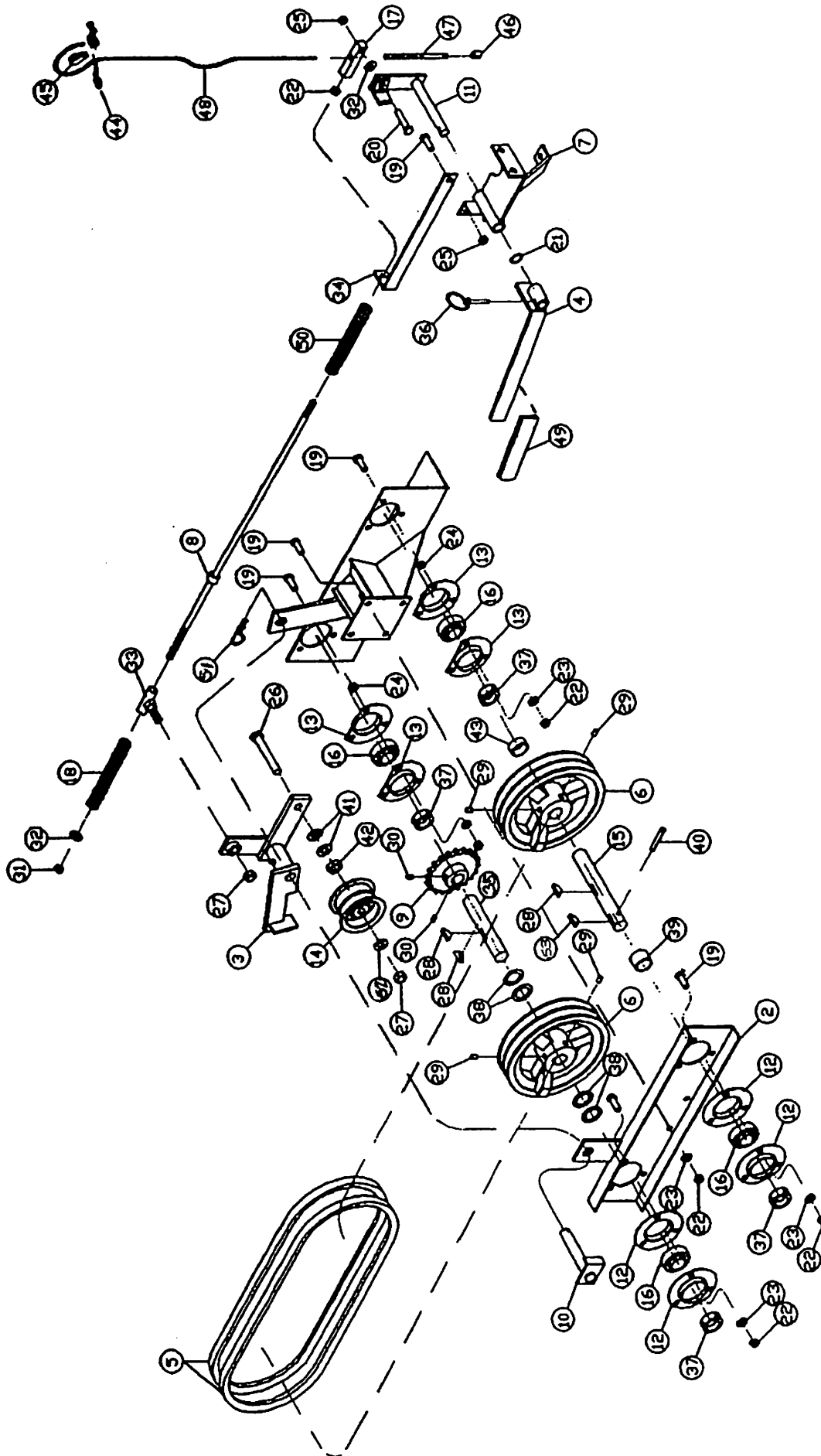
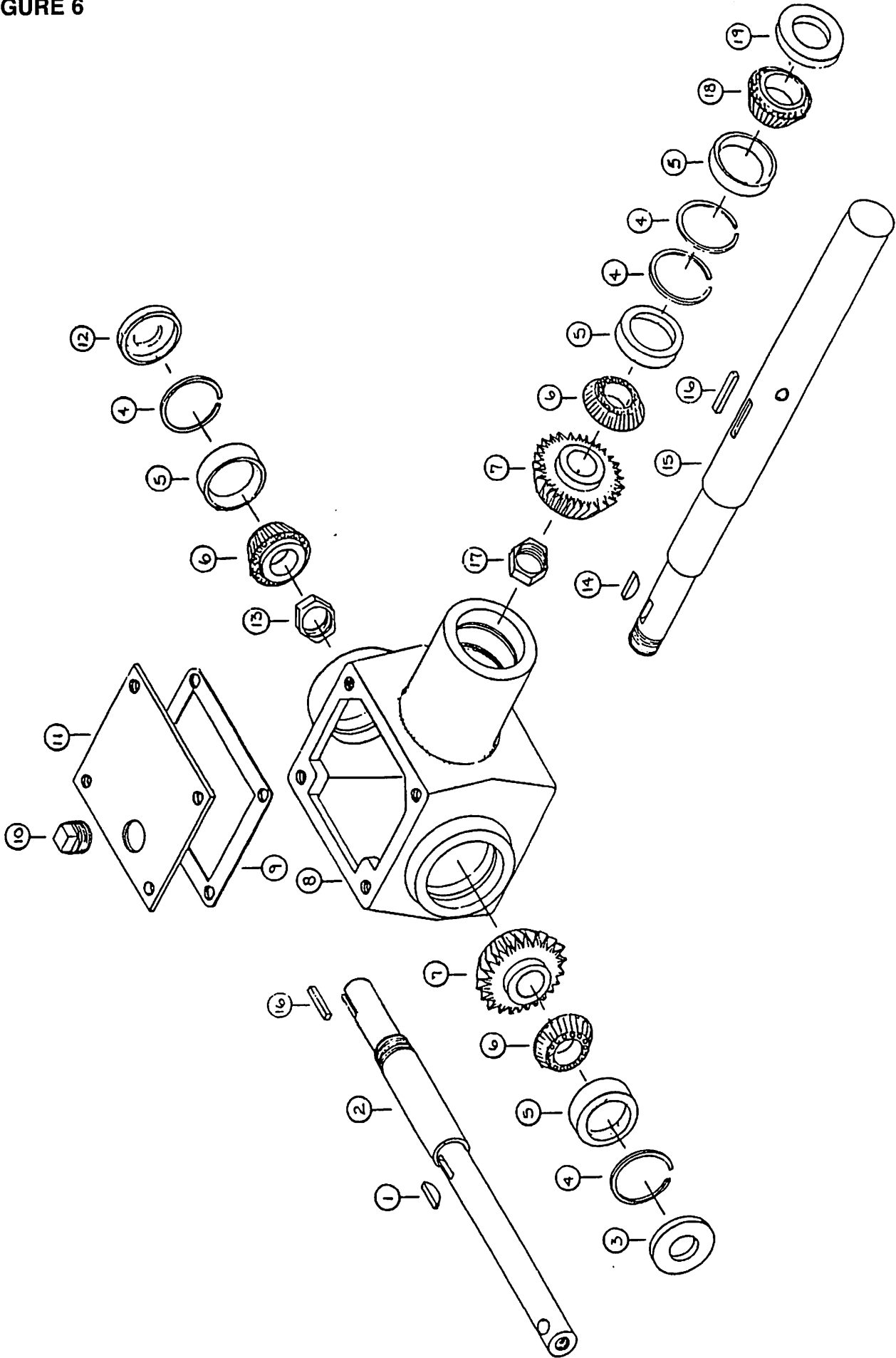


FIGURE 5
CROSS CONVEYOR CLUTCH - BELT DRIVE

ITEMPART NO.	DESCRIPTION	
2.	S335	Front Clutch Plate
3.	S341	Idler-Stop Assembly
4.	S337	Handle Lever
5.	S332	Drive Belt Set
6.	S342	Pulley
7.	S339	Handle Mount
8.	S343	Shifting Rod
9.	11S19	Sprocket 50B20
10.	S340	Tightener Pivot Shaft
11.	S338	Handle Lever
12.	4C7	Bearing Flange
13.	X85	Bearing Flange Sheared
14.	K156	Idler Pulley
15.	S458	Input Pulley Shaft
16.	4C8	Bearing
17.	S347	Shifter Rod End
18.	23N211	Spring 3/4"
19.	X111	3/8" x 1" Bolt GR.5
20.	BFR320	3/8" x 1-3/4" Bolt GR.2
21.	S352	Internal Star Washer
22.	K60	3/8" Nut
23.	B68	3/8" Lockwasher
24.	S355	3/8" Jam Nut
25.	K25	3/8" Locknut
26.	16SV91	1/2" x 3-1/4" Bolt GR.5
27.	R11	1/2" Top Locknut
28.	5B10	1/4" x 1" Woodruff Key
29.	---	3/8" Setscrew
30.	---	5/16" Setscrew
31.	A14	3/8" Nylock Nut
32.	X67	3/8" Flatwasher
33.	S344	Clutch Rod Slide
34.	S348	Spring Bracket
35.	S349	Drive Pulley Shaft
36.	S438	Clip Pin
37.	4C9	Bearing Lock Collar
38.	S345	Spacer (.074)
39.	K99	Spacer, 7/8"
40.	BFR335	5/16" x 2" Expansion Pin
41.	K68	1/2" Lockwasher
42.	X112	Spacer, 9/16"
43.	K106	Spacer, 1/2"
44.	BFR220	Cable Clamp
45.	ES4	Thimble
46.	ES5	Cable Compression Sleeve
47.	S361	Stop Cable Stiffener
48.	S358	Emergency Stop Cable
49.	S362	Handle Lever Grip
50.	S369	Spring 5/8"
51.	ES7	Hair Pin
52.	R35	1/2" Lock Washer (As Needed)
53.	S135	1/4" x 1-1/4" Square Key

FIGURE 6

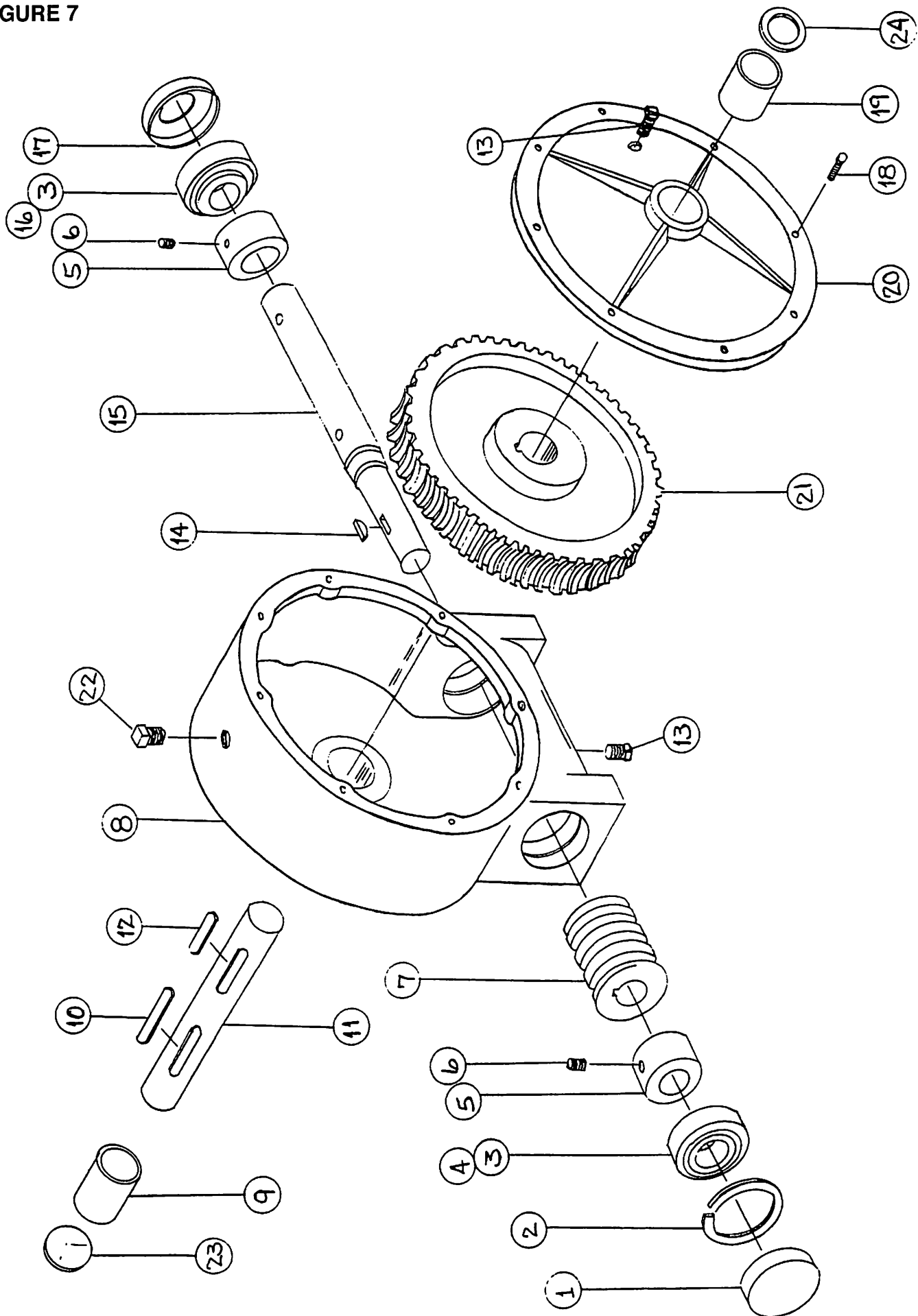


**FIGURE 6
BEVEL GEARBOX**

ITEM	PART NO.	DESCRIPTION
1.	5B10	1/4" x 1" Woodruff Key
2.	ST46	Gearbox Side Shaft
3.	3G9	Seal
4.	3G19	Snap Ring
5.	3G18	Race #15245
6.	3G7	Bearing #15101
7.	3G5	Gear
8.	3G1	Gearbox Housing
9.	3G2	Gearbox Gasket
10.	3G20	Fill Plug
11.	3G3	Cover
12.	3G9	Seal
13.	3G11	Nut
14.	5B10	1/4" x 1" Woodruff Key
15.	S134	Gearbox Front Shaft
16.	S135	1/4" x 1-1/4" Square Key
17.	3G4	Nut
18.	L3G24	Gearbox Bearing #15113
19.	S136	Seal
*	ST47	Gearbox Complete

NOTE: * (Means Not Shown)

FIGURE 7

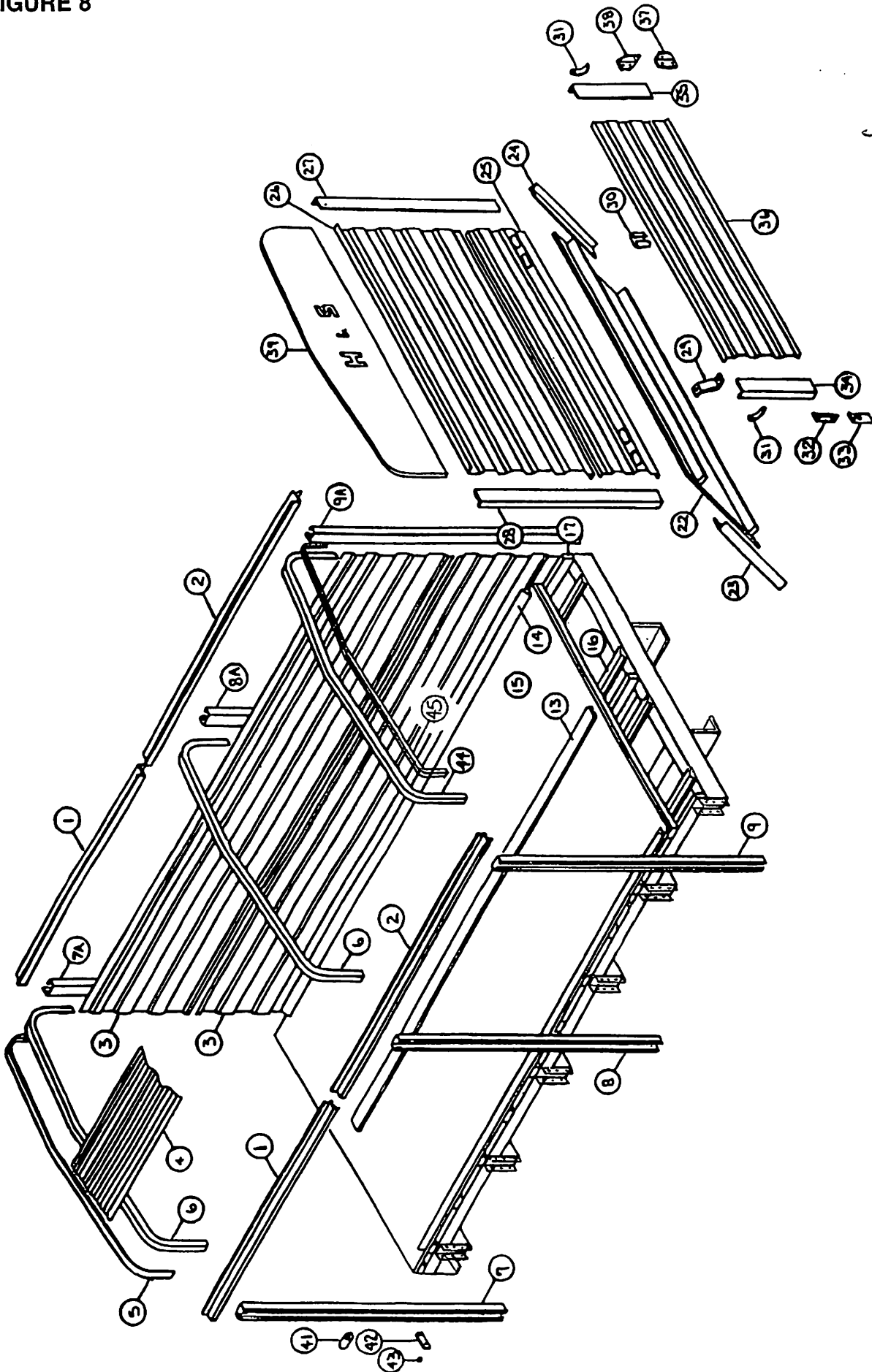


**FIGURE 7
WORM GEARBOX**

ITEM	PART NO.	DESCRIPTION
1.	G90	Dust Cap
2.	3G19	Snap Ring
3.	3G18	Race #15245
4.	3G7	Bearing #15101
5.	X9	Spacer
6.	G83	Set Screw
7.	G76	Worm
8.	G114	Gearbox Housing
9.	X8	Gearbox Bushing
10.	S138	3/8 x 2-3/8" Square Key w/Round Ends
11.	S139	Worm Gear Side Shaft
12.	S437	3/8 x 1-3/8" Square Key w/Round Ends
13.	G65	Plug 3/8"
14.	5B10	1/4 x 1" Woodruff Key
15.	S140	Worm Gear Front Shaft
16.	L3G24	Gearbox Bearing #15113
17.	G115	Seal
18.	G84	Cap Screw
19.	X75	Cover Bushing
20.	G116	Worm Gearbox Cover
21.	G77	Worm Gear
22.	G91	Vent Plug
23.	G117	Cap
24.	G120	Seal 1-7/8"
*	G118	Worm Gearbox Complete

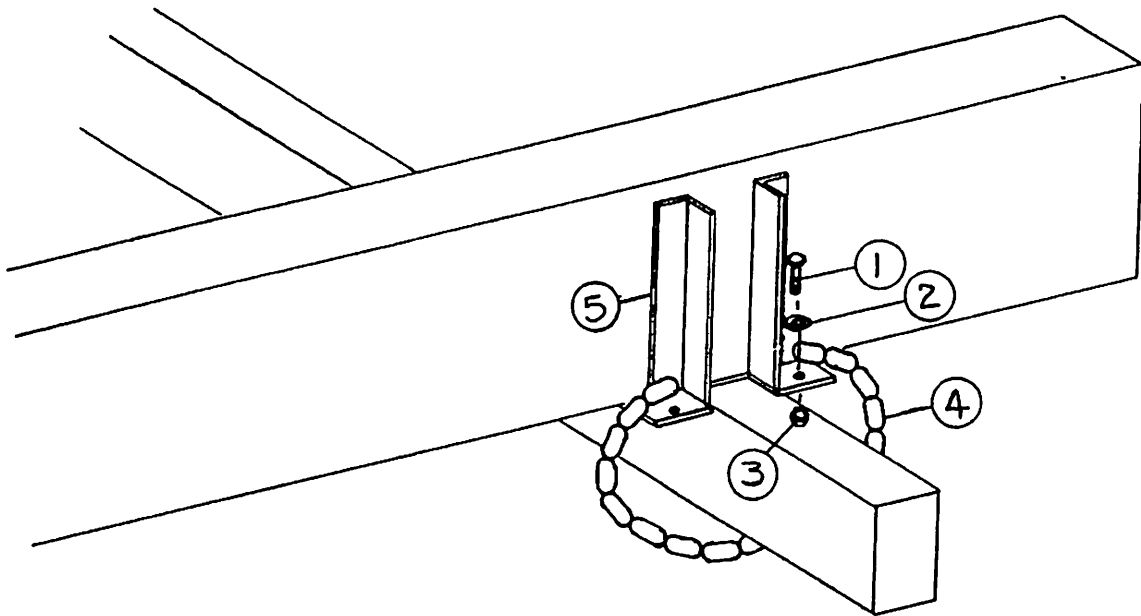
NOTE: * (Means Not Shown)

FIGURE 8



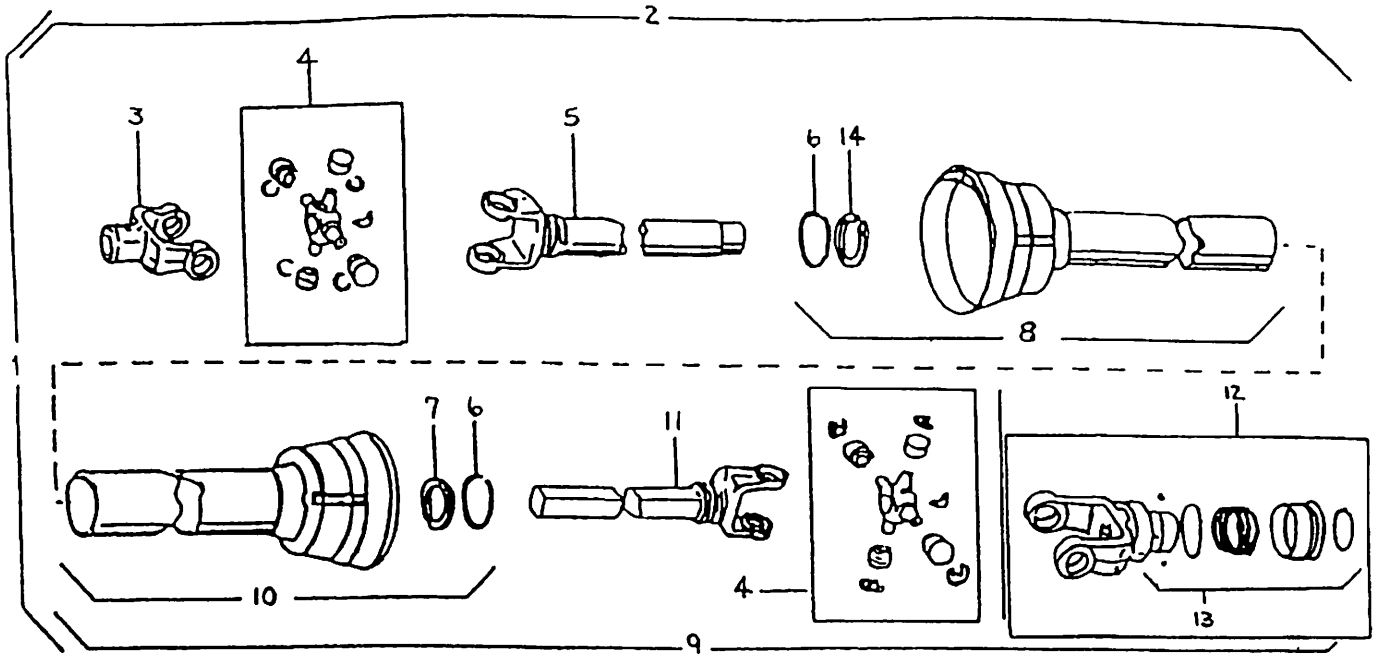
**FIGURE 8
BOX COMPONENTS**

ITEM	PART NO.	DESCRIPTION	ITEM	PART NO.	DESCRIPTION
1.	S142	14' Roof Sill Front Section	15.	S428	20' Apron Chain Side Spacer
	S143	16' Roof Sill Front Section		S489	21' Apron Chain Side Spacer
	S470	17' Roof Sill Front Section		S507	22' Apron Chain Side Spacer
	S144	18' Roof Sill Front Section		S168	14' Floor Assembly
	S471	19' Roof Sill Front Section		S169	16' Floor Assembly
2.	S423	20' Roof Sill Front Section	16.	S490	17' Floor Assembly
	S472	21' Roof Sill Front Section		S170	18' Floor Assembly
	S502	22' Roof Sill Front Section		S491	19' Floor Assembly
	S145	14' Roof Sill Back Section		S429	20' Floor Assembly
	S146	16' Roof Sill Back Section		S492	21' Floor Assembly
3.	S473	17' Roof Sill Back Section	17.	S508	22' Floor Assembly
	S147	18' Roof Sill Back Section		S408	14' Apron Chain Return Slide
	S474	19' Roof Sill Back Section		S271	16' Apron Chain Return Slide
	S424	20' Roof Sill Back Section		S493	17' Apron Chain Return Slide
	S475	21' Roof Sill Back Section		S272	18' Apron Chain Return Slide
4.	S503	22' Roof Sill Back Section	22.	S494	19' Apron Chain Return Slide
	S148	14' Side Steel		S430	20' Apron Chain Return Slide
	S149	16' Side Steel		S495	21' Apron Chain Return Slide
	S476	17' Side Steel		S509	22' Apron Chain Return Slide
	S150	18' Side Steel		S174	14' Floor Support 2x4
5A.	S477	19' Side Steel	23.	S175	16' Floor Support 2x4
	S425	20' Side Steel		S496	17' Floor Support 2x4
	S478	21' Side Steel		S176	18' Floor Support 2x4
	S504	22' Side Steel		S497	19' Floor Support 2x4
	S151	14' Roof Steel (5)		S431	20' Floor Support 2x4
5B.	S152	16' Roof Steel (5)	24.	S498	21' Floor Support 2x4
	S479	17' Roof Steel		S510	22' Floor Support 2x4
	S153	18' Roof Steel (5)		S184	Rear Slant Panel
	S480	19' Roof Steel		S185	LH Angle for Slant Panel
	S426	20' Roof Steel		S186	RH Angle for Slant Panel
6A.	S481	21' Roof Steel	25.	S307	Back Door Center Steel
	S505	22' Roof Steel		S188	Back Door Upper Steel
	S154	Branch Guard (14'-16')		S189	Back Door RH Side Piece
	ST61	Branch Guard (18'-20'-22')		S190	Back Door LH Side Piece
	S482	Branch Guard (17'-19'-21')		S191	Slant Panel Brace
6B.	S155	Roof Support (14'-16')	26.	F97	SMV Holder
	ST60	Roof Support (18'-20'-22')		S192	Handle Nut
	S483	Roof Support (17'-19'-21')		S193	LH Hinge Top Piece
	ST48	LH Front Stake		S194	LH Hinge Bottom Piece
	ST48	RH Front Stake		S195	Tailgate LH Side Piece
7A.	ST49	LH Side Stake	27.	S196	Tailgate RH Side Piece
	ST49	RH Side Stake		S197	Tailgate Steel
	ST50	LH Back Stake		S198	RH Hinge Bottom Piece
	ST51	RH Back Stake		S199	RH Hinge Top Piece
	S162	14' Apron Chain Center Spacer		S453	Back Door Top Panel (14'-16')
7B.	S163	16' Apron Chain Center Spacer	28.	S454	Back Door Top Panel (18'-20'-22')
	S484	17' Apron Chain Center Spacer		S499	Back Door Top Panel (17'-19'-21')
	S164	18' Apron Chain Center Spacer		ST55	Stake Spacer
	S485	19' Apron Chain Center Spacer		ST56	Cable Bracket
	S427	20' Apron Chain Center Spacer		ST57	Plastic Grommet for Cable
8A.	S486	21' Apron Chain Center Spacer	29.	S235	Rear Roof Support (14'-16')
	S506	22' Apron Chain Center Spacer		S236	Rear Roof Support (18'-20'-22')
	S165	14' Apron Chain Side Spacer		S500	Rear Roof Support (17'-19'-21')
	S166	16' Apron Chain Side Spacer		S154	Rear Branch Guard (14'+16')
	S487	17' Apron Chain Side Spacer		ST61	Rear Branch Guard (18'-20'-22')
8B.	S167	18' Apron Chain Side Spacer	30.	S501	Rear Branch Guard (17'-19'-21')
	S488	19' Apron Chain Side Spacer			



**FIGURE 9
TIE DOWN KIT**

ITEM	PART NO.	DESCRIPTION
1.	12V45	1/2" x 1-1/2" GR.5 Bolt
2.	K68	1/2" Flat Washer
3.	R11	1/2" Top Lock Nut GR.5
4.	S322	1/4" Chain 30-1/4" Long
5.	S323	Tie Down Bracket
6.	T9B	Tie Down Kit (Complete)



**FIGURE 10
PTO PARTS
HD NEEDLE BEARING PTO**

ITEM	PART NO.	DESCRIPTION
1.	S372	PTO Assembly Complete
2.	S373	Machine Half PTO W/Shield
3.	S374	End Yoke - Machine Half
4.	S375	"W" Repair Kit
5.	S376	Yoke and Tube
6.	24N26	Bearing Retainer
7.	S206	Nylon Bearing
8.	S397	Inner Guard Includes Cent. & Item #6 & #14
9.	S377	Tractor Half PTO
10.	S398	Outer Guard Includes Item #6 & #7
11.	S378	Yoke and Shaft
12.	S379	Lock Yoke - Yoke Assembly
13.	S225	Spring Lock Repair Kit
14.	S396	Nylon Bearing
*	S402	Safety Manual

NOTE: * (Means Not Shown)

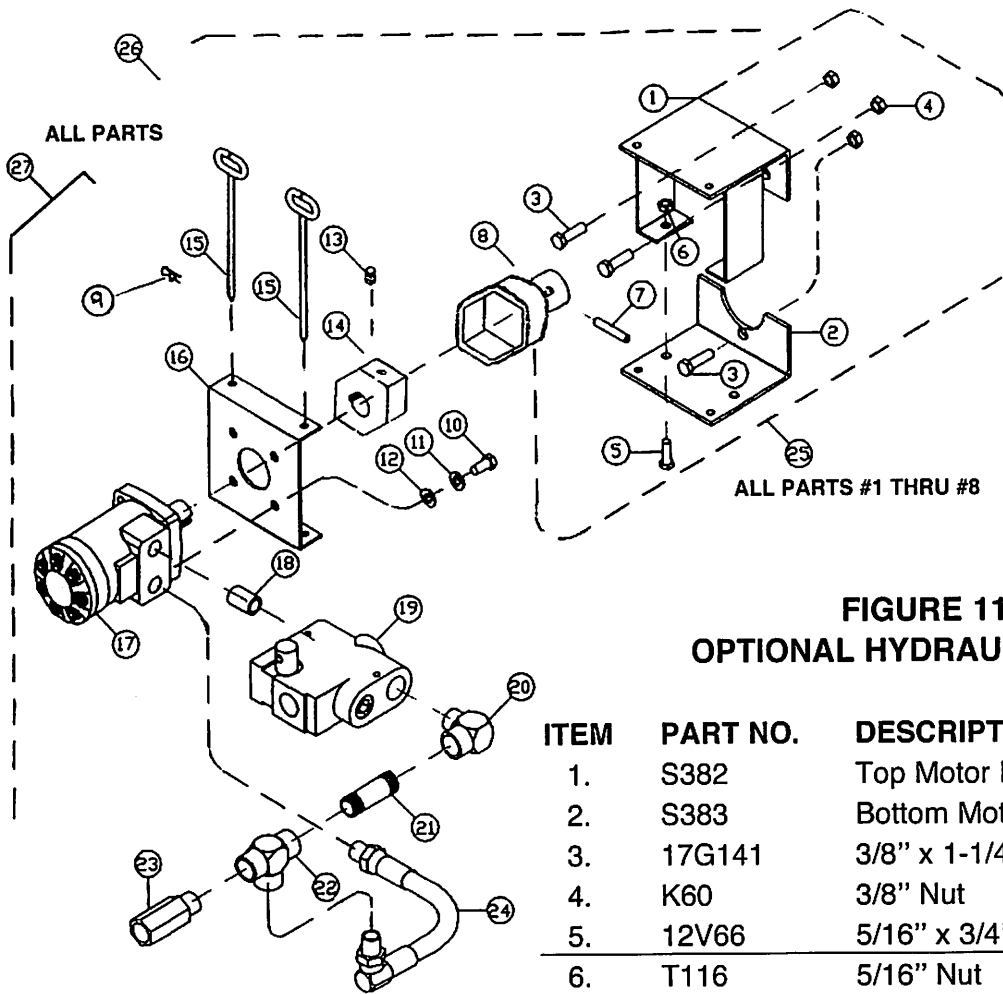
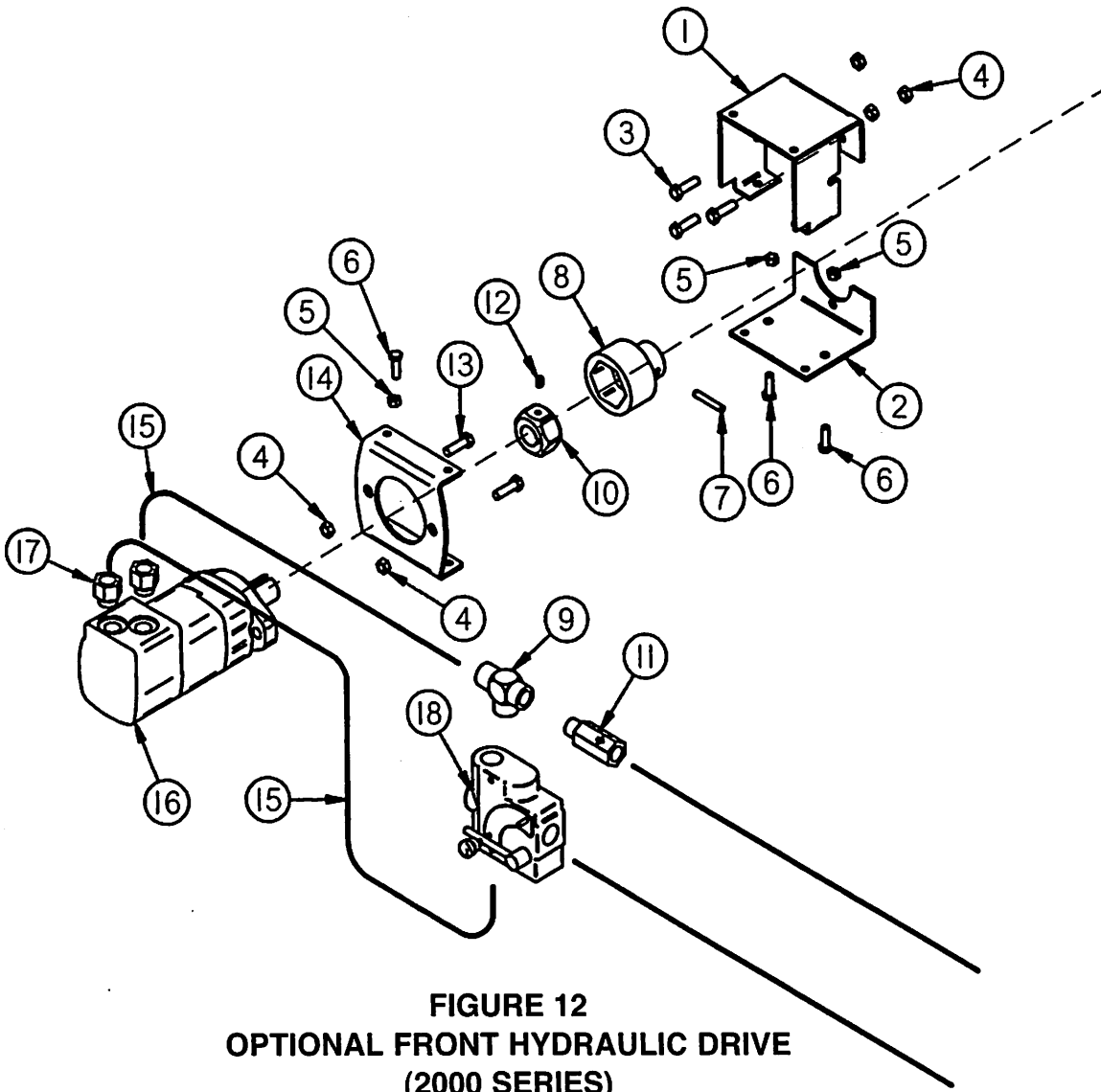


FIGURE 11
OPTIONAL HYDRAULIC DRIVE

ITEM	PART NO.	DESCRIPTION
1.	S382	Top Motor Hanger
2.	S383	Bottom Motor Hanger
3.	17G141	3/8" x 1-1/4" Bolt GR.5
4.	K60	3/8" Nut
5.	12V66	5/16" x 3/4" Bolt
6.	T116	5/16" Nut
7.	3G22	5/16" x 1-3/4" Roll Pin
8.	S411	Secondary Drive
9.	X97	Hair Pin
10.	G110	3/8" x 3/4" Bolt
11.	B68	3/8" Lockwasher
12.	X67	3/8" Flat Washer
13.	---	5/16" Set Screw
14.	S410	Primary Drive
15.	S386	Motor Unit Mount Pin
16.	S384	Hydraulic Motor Mount
17.	DF1A	Hydraulic Motor (Super 7+4)
*	ST88	Hydraulic Motor (Twin Auger)
18.	DF7	1/2" Close Nipple
19.	DF15	Flow Control Valve
20.	HE58	1/2" Street Elbow
21.	DF17	1/2" x 2" Pipe Nipple
22.	DF8	1/2" Pipe Tee
23.	DF18	1/2" Check Valve
24.	S395	Hydraulic Hose - 10-1/2"
25.	S388	Extra Unit Drive Kit
26.	S412	Drive Kit (complete Super 7+4)
27.	ST90	Drive Kit (complete - Twin Auger)



**FIGURE 12
OPTIONAL FRONT HYDRAULIC DRIVE
(2000 SERIES)**

ITEM	PART NO.	DESCRIPTION
1.	S382	Top Motor Hanger
2.	S383	Bottom Motor Hanger
3.	17G141	3/8" x 1-1/4" GR.5 Bolt
4.	K60	3/8" Nut
5.	T116	5/16" Nut
6.	12V66	5/16" x 3/4" Bolt
7.	3G22	5/16" x 1-3/4" Expansion Pin
8.	S411	Secondary Drive
9.	S460	Male-Female Tee (5604-12)
10.	S463	Primary Drive
11.	PB185	Check Valve
12.	S435	5/16" Set Screw
13.	LW134	3/8" x 1-1/2" GR. 5 Bolt
14.	S464	Hydraulic Motor Mount
15.	S462	Hydraulic Hose 3/4" x 44"
16.	16SV150	Hydraulic Motor (104-1027-006)
17.	S461	O'Ring Adapter
18.	33SV74	Flow Control Valve